

FORD FIESTA SPRINT CUP

Drivers Briefing – Jack's Racing Day
TT Circuit Assen



Race Director Team:

Kees Koning
Bobbe Veldkamp / Jaap Molmans
Annemieke Veldkamp / Arie Kroeze

Stewards:

Gerard du Pre / Luc Gommers
Leo Suetens / Herman ter Beek/ Paul van Houtum (adjunct)

Secretary of the meeting

Alfred Hoven

Team Relations:

Wim Cools
Koen Wijckmans

Promotor:

Renata Aartsen
Dick van Elk



Sportity

For direct event information please download the Sportity app and insert this password:

FFSC2022
VRM2022

Time schedule V7



Available on the
App Store



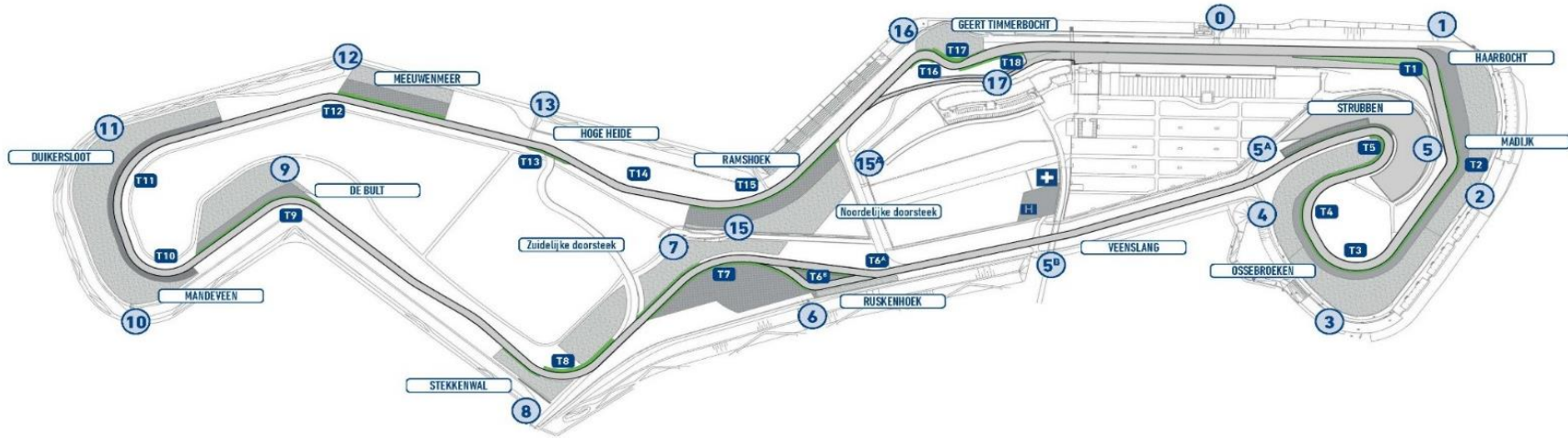
Get it on
Google play



- Check your transponder
- Puncture? Change tyre in pitlane
- Parc Fermé rules also apply on on-board camera's
- Fuel only from circuit fuel station (Oct98)
- Tyre declaration notes (deliver in time at Scrutineering)
- Starting numbers after FP2
- Spa questions?

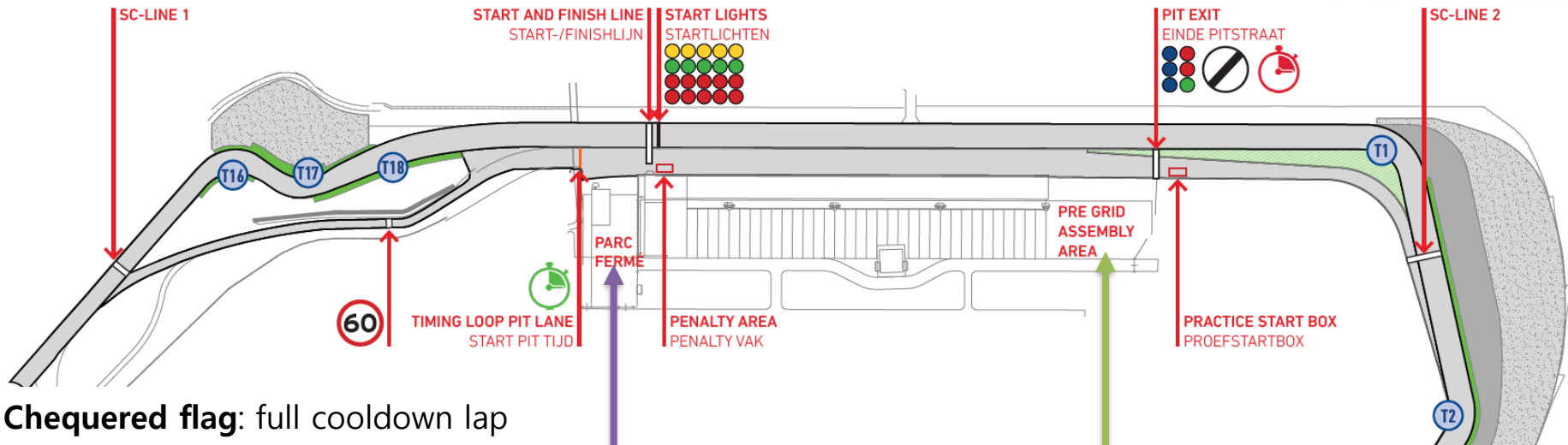
The Circuit

FORD FIESTA
SPRINT CUP-NL
FORD FIESTA
SPRINT CUP-BE



TT-Circuit Assen

- Length: **4.555** meter
- Direction: **Clockwise**
- Start: **Standing start**
- Pole Position: **Left Side**
- Practice starts: **Pit-Exit**
- Penalty Area: **Underneath Podium,**
- Pitlane Speed: **60 KM/H**



- **Chequered flag**: full cooldown lap

- **Race**: Top 3 cars overall to the podium, and then pushed back to PF

Off Track /
Parc Ferme

On Track

All cars must be at the pre-start area **20 min. before** the official session starting time

Short route to the GRID

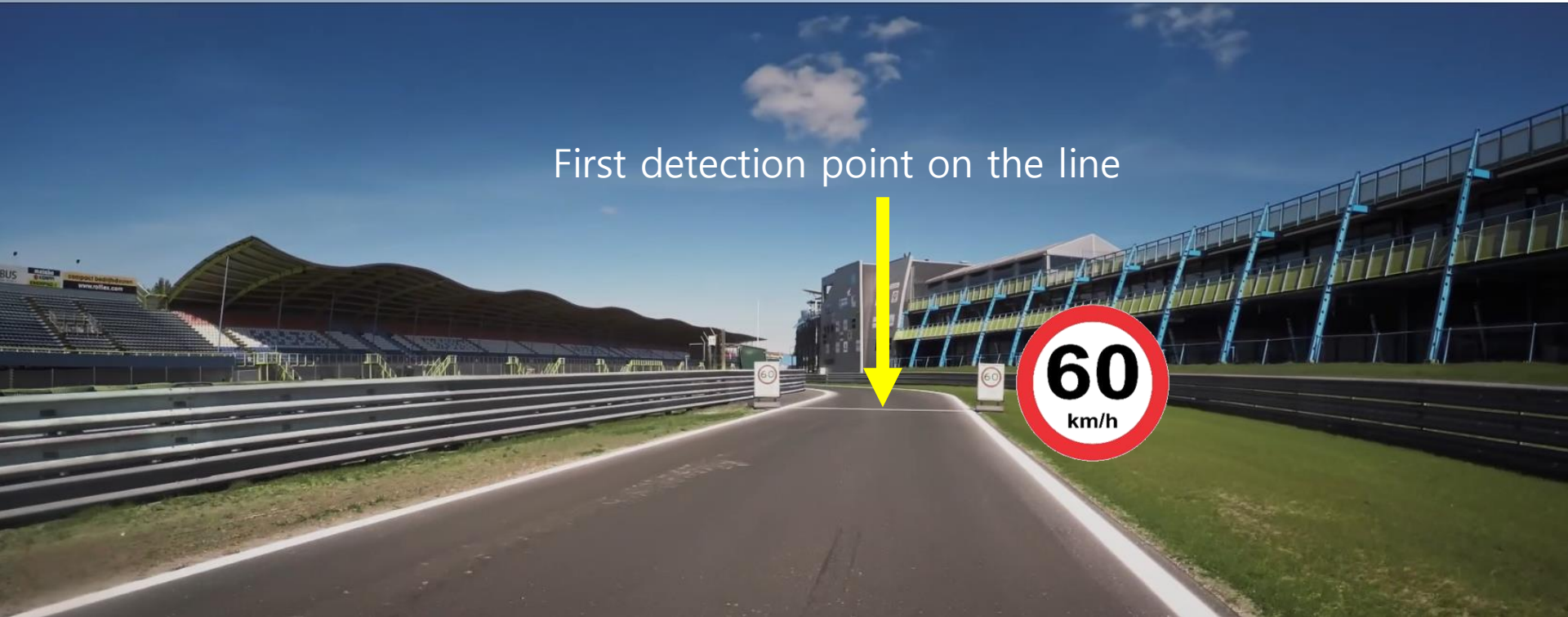
Or when having a technical problem in Sector 1

FORD FIESTA
SPRINT CUP-NL
FORD FIESTA
SPRINT CUP-BE



Pit in – 60 KPH

First detection point on the line

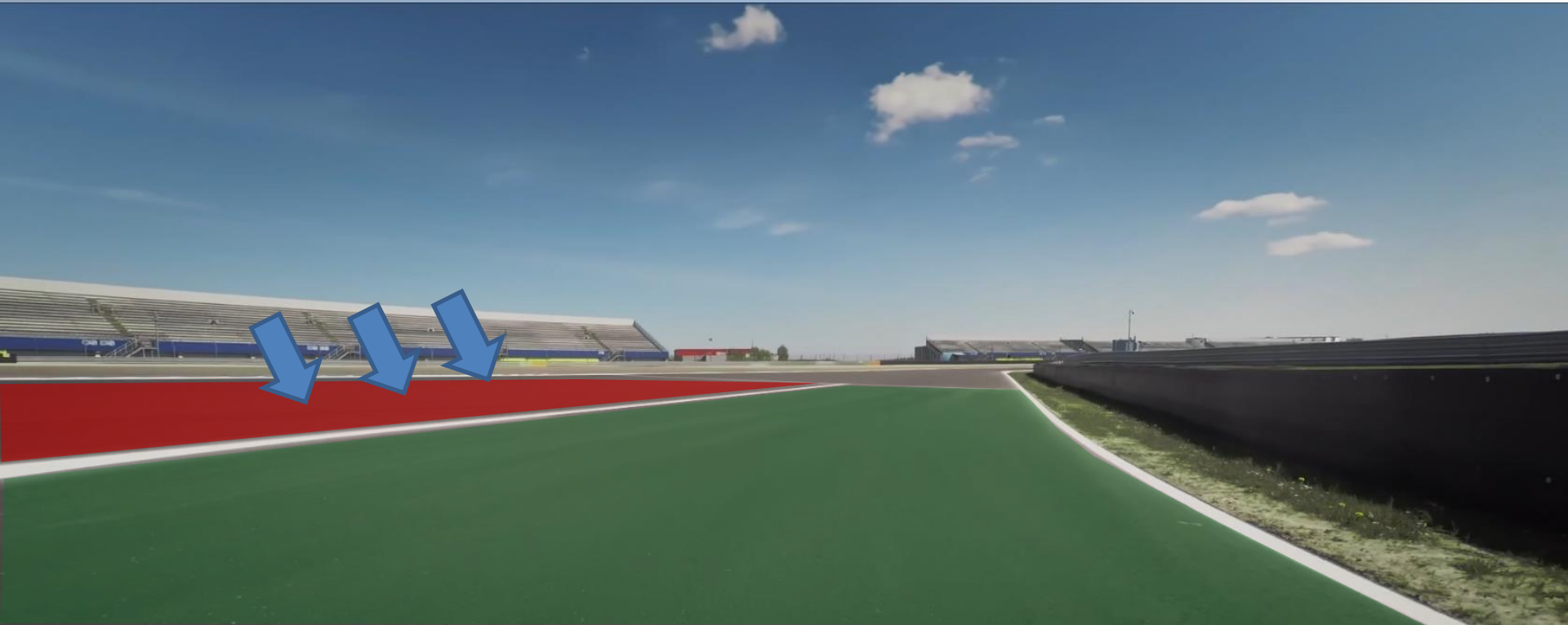


Pit out

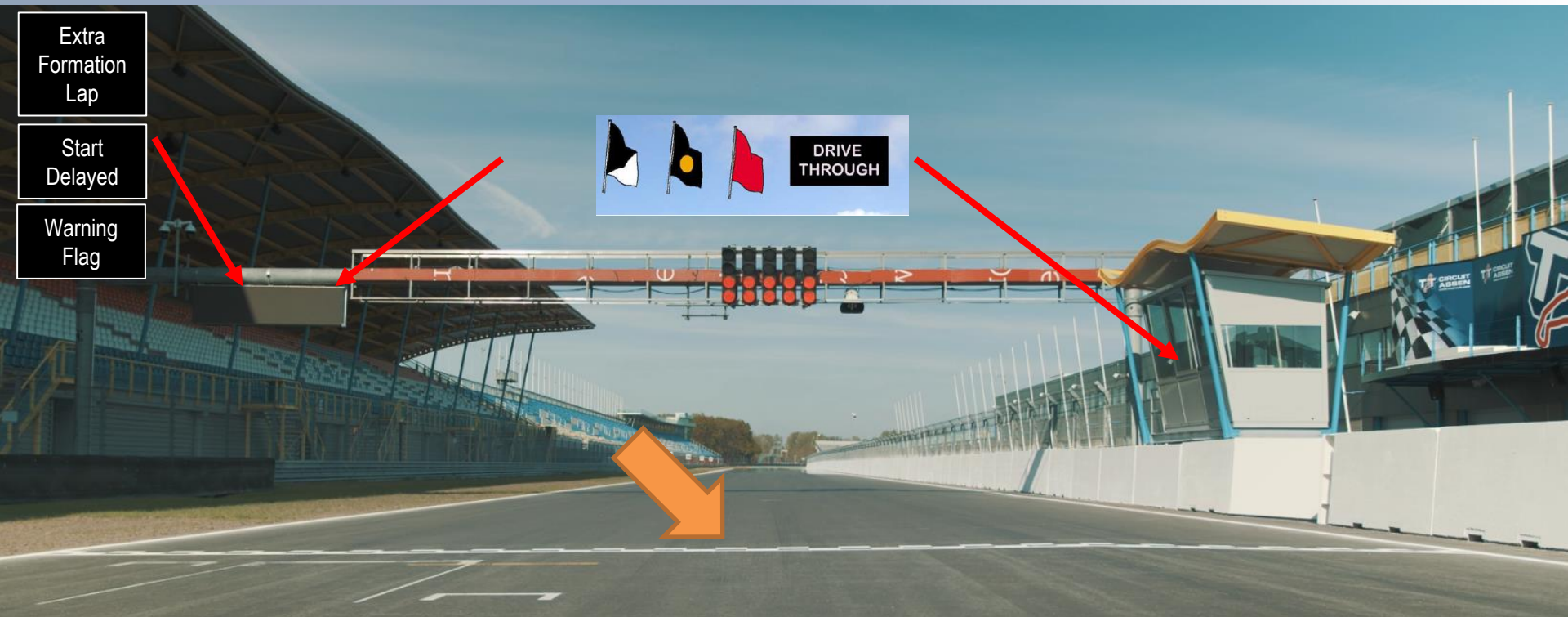
Practice starts area

White Line Pit Exit

FORD FIESTA
SPRINT CUP-NL
FORD FIESTA
SPRINT CUP-BE



Finish Control Line | Signalling Area



Penalty Box



- Technical Flag (Meatball)



- Black Flag



- Warning Flag

Basics – Starting Procedure

- Know your grid position
- No tyre trolleys on the grid
- Wait for the warm-up lap to start (green flag & green lights at gantry)
- Grand prix start (sequence of lights)



LED Panels



Flags and LED Panels (In Assen known as Digiflags) have the same meaning

In case of contradicting flags: the safety flags go first

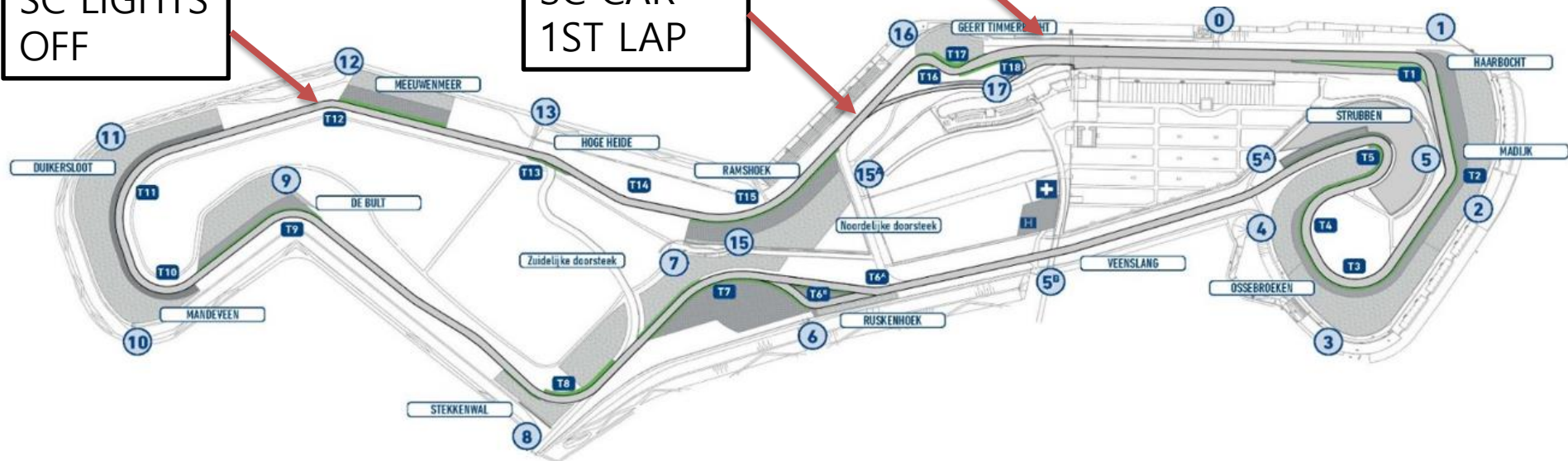
Safety car

FORD FIESTA
SPRINT CUP-NL
FORD FIESTA
SPRINT CUP-BE

SC LIGHTS
OFF

SC CAR
1ST LAP

SC CAR
POSITION



SAFETY CAR PROCEDURE

- YELLOW FLAGS + BOARDS "SC"
- NO OVERTAKING
- WATCH OUT FOR INTERVENTION VEHICLES
- RESTART FROM THE CONTROL LINE
- OVERTAKING AFTER THE CONTROL LINE

RESTART FROM THE CONTROL LINE

- 1 single waved green flag
- OVERTAKING ALLOWED AFTER THE CONTROL LINE

START OF THE VSC PROCEDURE

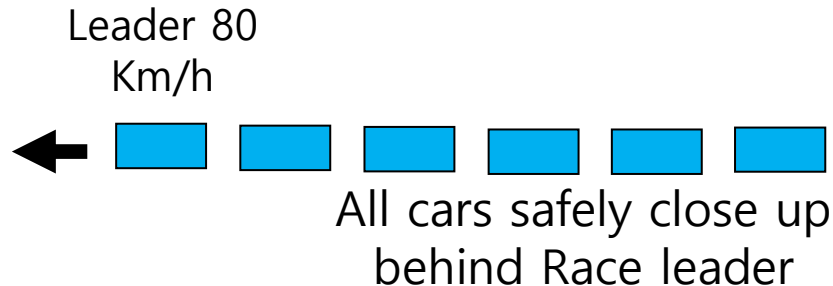
ON THE DIGIFLAGS "VSC" + YELLOW FLAGS
NO OVERTAKING + 80 KPH FOR THE LEADER

- Drivers behind the leader, may close the gaps, but SAFETY always has priority
WATCH OUT FOR INTERVENTION VEHICLES

ENDING OF THE VSC PROCEDURE

DIGIFLAGS OFF: RESTART BETWEEN 5 AND 10 SEC
LEADER IS ALLOWED TO SPEED UP

- Overtaking is not allowed until the LED panels DISPLAY green.
DIGIFLAGS GREEN: RESTART. OVERTAKING IMMEDIATELY ALLOWED



Full Course Yellow FCY



yellow flags are shown –
reduce the speed and be prepared to
change direction.

Slow down to 80 km/h
Overtaking is forbidden

Flag Signals – Red Flag



- Reduce Speed. Be Prepared to Stop!
- Session is Suspended
- Follow Marshall's Instructions

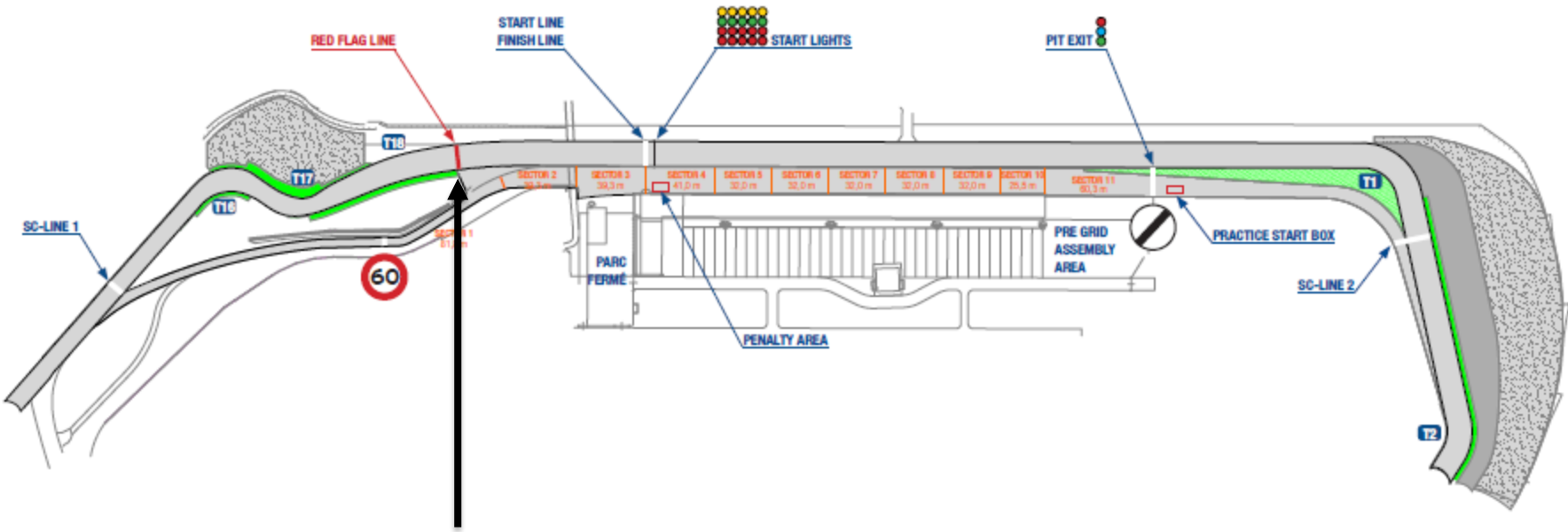
Free Practice & Qualifying

All cars into pitlane

Race

All cars in 1 line in front of the redflag line

Red flag line



In accordance with the rules of the FIA International Sporting Code – Appendix L, the **white lines define the track edges**

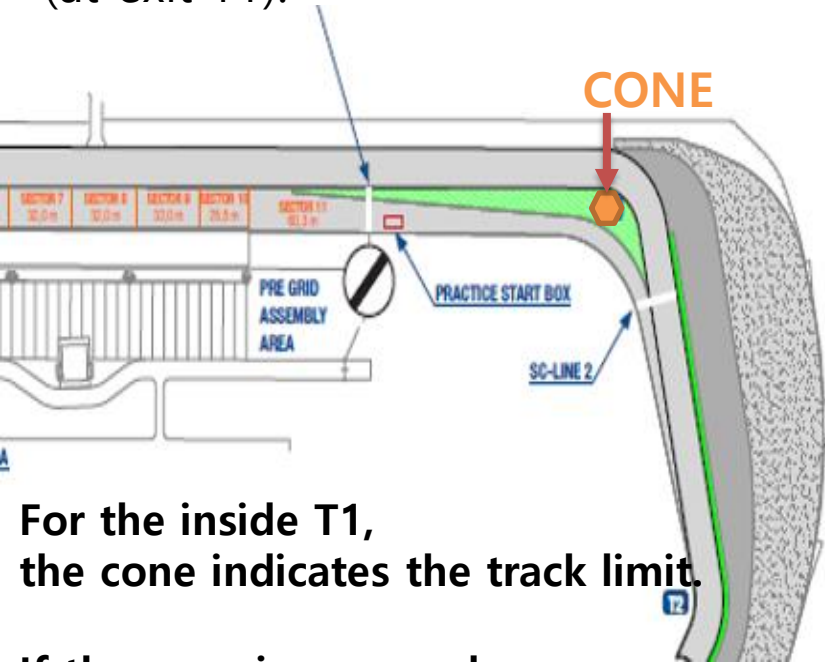
Drivers must use the track at all times and **may not leave the track without a justifiable reason**. For the avoidance of doubt, the white lines defining the track edges are considered to be part of the track but the kerbs are not.

Should a car leave the track for any reason, the driver may rejoin.

However, this may only be done when it is **safe to do so and without gaining any lasting advantage**. A driver will be judged to have left the track if no part of the car remains in contact with the track.

Track Limits T1

Track limit after red-white-blue curb (at exit T1).



For the inside T1,
the cone indicates the track limit.

If the cone is removed,
Appendix L applies.

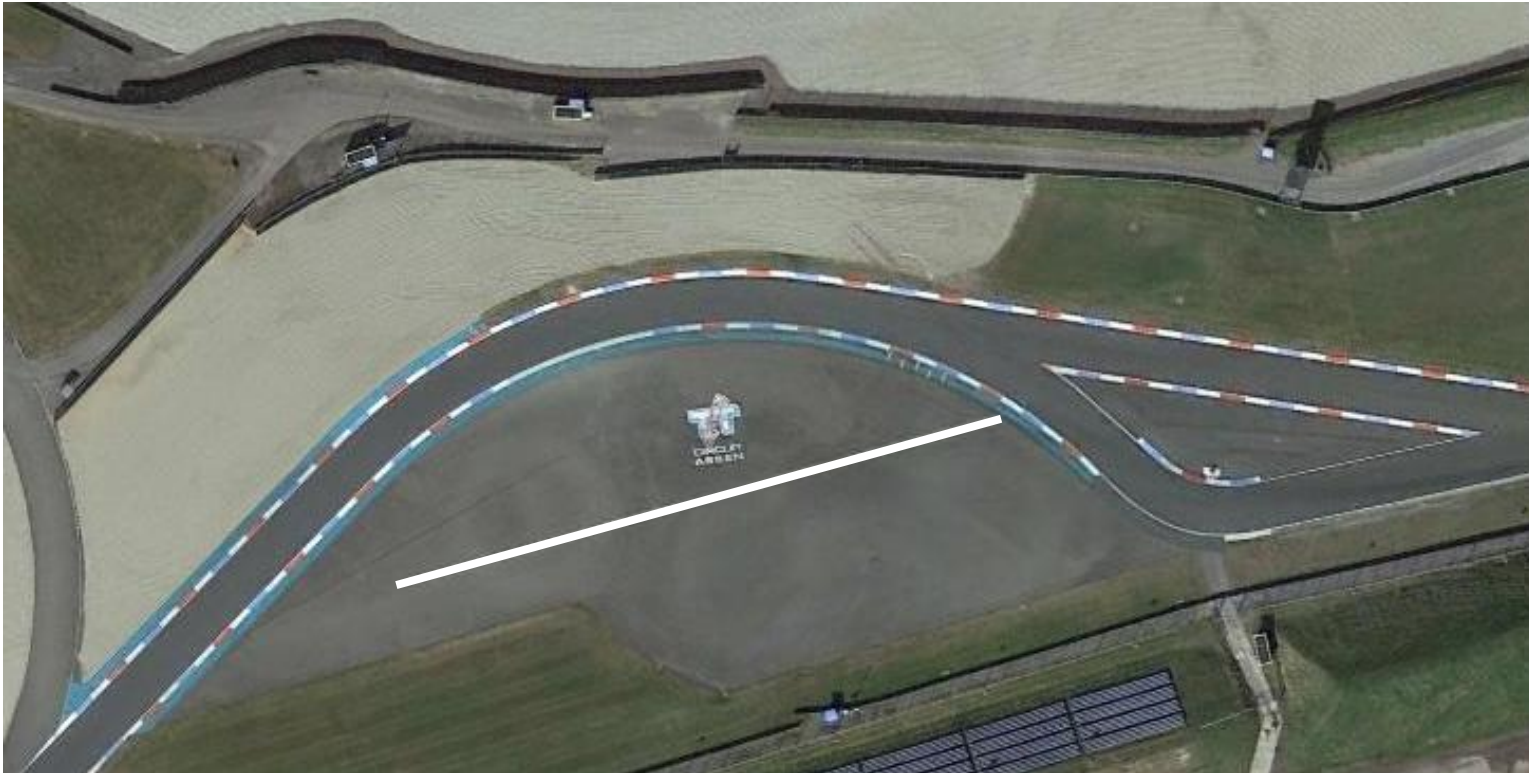
Track Limits T6/T7

FORD FIESTA
SPRINT CUP-NL
FORD FIESTA
SPRINT CUP-BE



The cones indicate the track limits.
If the cones are removed, Appendix L applies.

Route at T6/T7



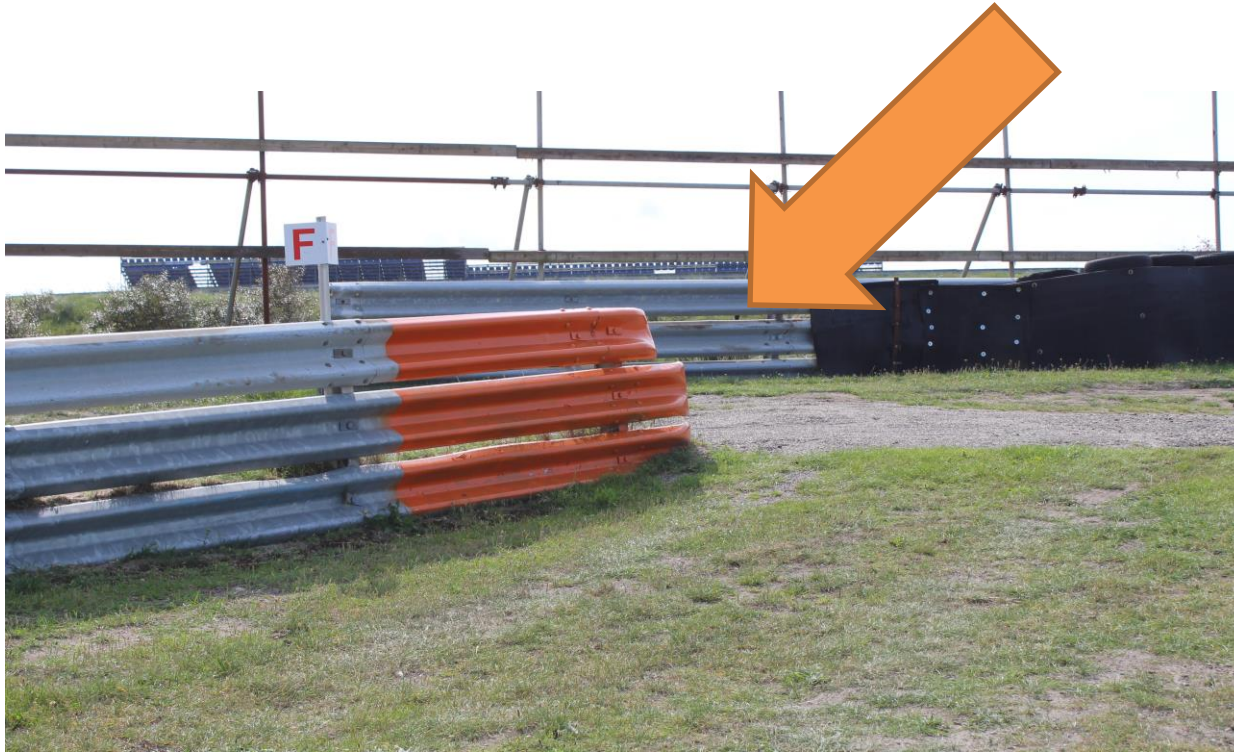
Drivers must stay on the left side of the
WHITE line, and merge in safely and without any advantage

Track Limits T15/T16



The cones indicate the track limits.
If the cones are removed, Appendix L applies.

Safety – Stopping on Track



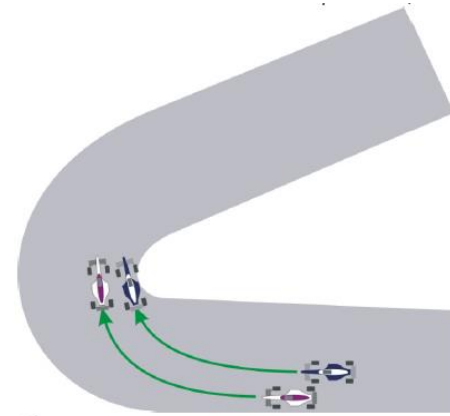
- An orange armco means an opening in the guardrail.
- It's a safe place to park your car after a technical defect

Driving Conduct

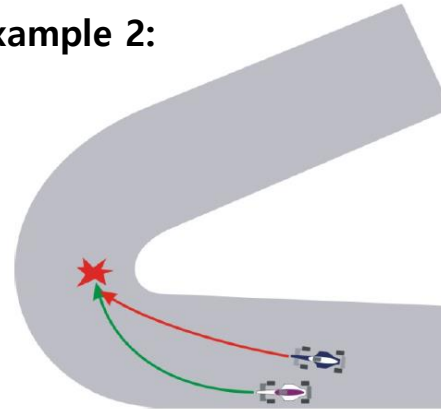
A penalty may be applied if (causing a collision)

- The inside car overshoots the corner and crashes in the outside car (goes too fast and causes a collision) (*example 2*)
- The outside car does not leave space for the inside car. The Outside Car must leave at least one car width space inside, allowing the attempt to pass (*example 3*)

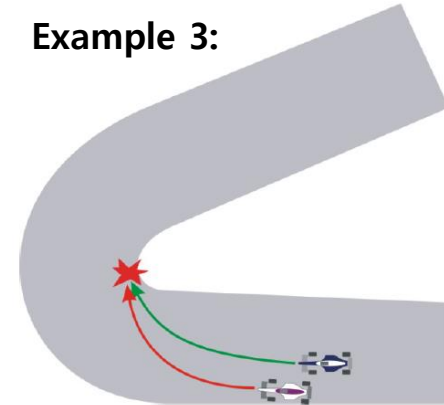
Example 1:



Example 2:



Example 3:



Examples

- Jumpstart
- Ignoring flag signals or Instructions from marshals
- Overtaking under yellow, red or after chequered flag
- Speeding under FCY, Pit lane, Yellow.
- Dangerous driving behaviour with or without contact
- Unsportsmanlike behaviour
- Change direction more than once
- Take advantage of an unclear situation
- Track limits

Penalties will be applied based on a fixed penalty list

- Deleting (fastest) lap time(s)
- Time penalty
- Position penalty
- Grid penalty
- Starting from pitlane
- Drive through
- Stop and Go
- Stewards decisions

Penalty can come with extra point(s) on your licence:

5 Points	drop of 3 places on the grid next race
8 Points	drop of 10 places on the grid next race
10 Points	Start from pit lane next race

QUESTIONS? MAKE IT A GREAT WEEKEND!

SAFETY – RESPECT - SPORTSMANSHIP



AND BECAUSE IT'S PRIDE WEEK
LET'S BE EXTRA NICE TO EACH OTHER